

USAGE: For individuals over the age of 55, take 1 capsule per day or as directed by your qualified health care consultant. Individuals under the age of 55 should consult a physician before using Pregnenolone.

WARNING: Not for use by individuals under the age of 20 years. **DO NOT USE** if pregnant, nursing, or trying to conceive. This product is not a training aid. Use of this product as a training aid, especially in younger individuals, may result in adverse health effects and will not benefit strength training. Consult a physician or licensed qualified health care consultant before using this product if you have, or have a family history of, a hormonally related cancer (such as breast or prostate cancer), prostate enlargement, heart disease, low "good" cholesterol (HDL), or if you are using any other dietary supplement, prescription drug, or over-the-counter drug. Do not exceed recommended serving. Exceeding recommended serving may cause adverse health effects. Possible side effects include acne, hair loss, facial hair growth in women, aggressiveness, irritability, and increased levels of estrogen. Discontinue use and call a physician or licensed qualified health care professional immediately if you experience rapid heartbeat, dizziness, blurred vision, or other similar symptoms.*

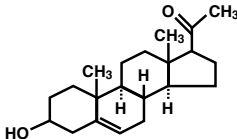
Keep out of the reach of children.

* These statements have not been evaluated by the Food and Drug Administration. This product is not intended to diagnose, treat, cure or prevent any disease.

Lot #. Best Used Before:

Jarrow FORMULAS®

Pregnenolone 25



25 mg 90 Vegetarian Capsules

Dietary Supplement

Supplement Facts

Serving Size 1 Capsule Servings Per Container 90

	Amount Per Serving	% DV
Pregnenolone	25 mg	*

* Daily Value not established.

Other Ingredients: Cellulose, magnesium stearate (vegetable source) and silicon dioxide. Capsule consists of hydroxypropylmethylcellulose.

No wheat, no gluten, no soybeans, no dairy, no egg, no fish/shellfish, no peanuts/tree nuts.

Suitable for
vegetarians/vegans.



Distributed Exclusively by:

Jarrow FORMULAS®

Superior Nutrition and FormulationSM

P.O. Box 35994

Los Angeles, CA 90035-4317

www.Jarrow.com



10511PREG25
PROD # 115063

© 2011 **Jarrow FORMULAS®**