

(PLEASE READ THE ENTIRE LABEL BEFORE USE)

Recommended Use: Take 1 capsule up to 2 times daily. Allow 3 to 4 hours between servings. Do not exceed 2 capsules daily.

Warning: This product is only intended to be consumed by healthy individuals 18 years of age or older. Consult your physician prior to use if you are pregnant or nursing. Do not exceed recommended use. Improper use will not improve results and is not advised. The recommended dose of this product contains as much caffeine as about 2 cups of coffee. Limit the use of caffeine-containing medications, foods or beverages while taking this product, as too much caffeine may cause nervousness, irritability, sleeplessness, and occasional rapid heart rates. In case of accidental overdose, seek professional assistance or contact a poison control center immediately. Keep out of reach of children. Store in a cool dry place. Do not use if safety seal is broken.

The statements made hereon have not been evaluated by the Food and Drug Administration. This product is not intended to diagnose, treat, cure, or prevent any disease.

© 2015 Nutricost, LLC

1404 W State Street #208, Pleasant Grove, UT 84062

Made in the USA

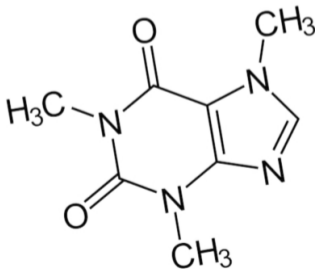
www.nutricost.com



nutricost[™]

Caffeine

200MG | **240** | **240**
per capsule | capsules | servings



240 Capsules | Dietary Supplement

Supplement Facts

Serving Size: 1 Capsule
Servings Per Container: 240

Amount Per Serving	% DV
Caffeine Anhydrous	200mg *

* Daily Value not established

Other Ingredients: Gelatin, Rice Flour

