

# Slow Motion Melatonin

Slow Motion Melatonin is a specially prepared low dose melatonin. It is stabilized in a patent-pending lipid matrix system, which protects the melatonin from harsh gastric juices and is designed to allow absorption via the lymph.\*

## Suggested Use

As a dietary supplement, 1 tablet 30 minutes before bedtime, or as directed by a healthcare practitioner.

**Warning:** Melatonin may have a strong sedating effect within 20 minutes of consumption. Not to be used during daytime. Not recommended for women who are pregnant, wishing to become pregnant, or breastfeeding; for children or adolescents; or for those with a prior history of seizures. Do not use while operating a motor vehicle or other machinery. In rare cases it may stimulate seasonal affective disorder, depression, or have stimulatory effects.

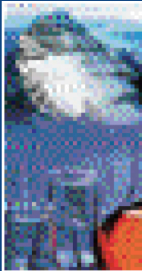


Rev. 002



# Slow Motion Melatonin

## 1.2 mg in Lipid Matrix



dietary supplement  
**HYPOALLERGENIC**  
60 tablets

Supplement Facts		
Serving Size	1 Tablet	
Servings Per Container	60	
Amount Per Serving	% Daily Value	
Melatonin	1.2 mg	†
† Daily value not established.		

Other Ingredients: Silicified microcrystalline cellulose, Micosolle™, hydroxypropyl methylcellulose, safflower oil, carnauba wax, magnesium stearate.

Store in a cool, dry place, tightly capped.

**\*This statement has not been evaluated by the Food and Drug Administration. This product is not intended to diagnose, treat, cure or prevent any disease.**

Formulated exclusively for Allergy Research Group®  
Alameda, CA, 94502 [www.allergyresearchgroup.com](http://www.allergyresearchgroup.com)  
Phone: 510.263.2000