

RECOMMENDED USE: Shake well. Always begin use with one-quarter bottle (2 ounces) of REDLINE XTREME® daily, to assess tolerance. Never exceed more than 4 ounces per serving or more than one bottle daily. Use the gauge on the bottle to find your ideal dose.

DO NOT FOR USE BY INDIVIDUALS UNDER THE AGE OF 18 YEARS. DO NOT USE IF PREGNANT OR NURSING OR CONTEMPLATING BECOMING PREGNANT. Do not take this product with alcohol or with any product containing caffeine or other ingredients that have a known stimulant effect, such as ephedrine, pseudoephedrine or phenylpropanolamine (ingredients found in certain allergy, asthma, cough, and weight loss products). Consult your physician or licensed qualified health care professional before using this product if you are taking any prescription or over-the-counter medications or supplements. Do not use this product if you are at risk or are being treated for any medical condition including, but not limited to: high or low blood pressure; cardiac arrhythmia; stroke; heart, kidney or thyroid disease; seizure disorder; psychiatric condition; difficulty urinating; prostate enlargement; diabetes; or if you are taking a MAO inhibitor (MAOI). Discontinue use and consult your health care professional if you experience any adverse reaction to this product including, but not limited to rapid heartbeat, dizziness, severe headache, shortness of breath, or other similar symptoms. Do not use this product if you are more than 15 pounds overweight. The consumer assumes total liability if this product is used in a manner inconsistent with the label guidelines. One serving of REDLINE® XTREME contains 158 mg of caffeine which is less than two cups of coffee. Use only as directed. Do not exceed recommended daily intake. KEEP OUT OF REACH OF CHILDREN!

These statements have not been evaluated by the Food and Drug Administration. This product is not intended to diagnose, treat, cure or prevent any disease.

††REE: Examination of a Pre-Exercise, High Energy Supplement on Exercise Performance. Jay R. Hoffman, et al. ISSN 2009, 8:2 (6 January 2009)

LIVESTRONG UNIVERSITY STUDIED

† 7.6% IMPROVEMENT IN REACTION TIME!

† 1.4 POTENT 1.9% INCREASE IN ENERGY!

† AN AMAZING 15% INCREASE IN MENTAL FOCUS!



Made in USA from Domestic & Imported Ingredients in 100% State of the Art Facilities

CAUTION
Read Label
before drinking.

CONTAINS
2 SERVINGS

8 FL OZ 240(mL)

DIETARY SUPPLEMENT



BCAAs
+ELECTROLYTES

TRIPLE
BERRY
ARTIFICIALLY FLAVORED

REDLINE®
ULTIMATE ENERGY RUSH!™

DRINK HALF BOTTLE ONLY

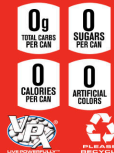
DRINK REGULATION GAUGE



7.5% FASTER REACTION TIME!†
ONE SERVING
4 OZ. MARK

CONTAINS 2 SERVINGS

†† Study based on humans drinking 4 ounces (1/2 bottle) Redline Xtreme.



©2014 VITAL PHARMACEUTICALS, INC.
ALL RIGHTS RESERVED.
TO REPORT A SERIOUS ADVERSE EVENT OR
OBTAIN PRODUCT INFORMATION CONTACT
1600 North Park Drive, Weston, FL 33326
USA • (954) 641-0570

VPXSPORTS.COM

CA CASH REFUND ME 50¢ OFF



BEST BY DATE ON BOTTOM

VPX

CONTAINS NO FRUIT JUICE.

SUPPLEMENT FACTS

Serving Size 1/2 Bottle (4 FL OZ [120 mL])
Servings Per Container 2

Amount Per Serving		%Daily Value
Calories	0	
Sodium	10 mg	0%
Electrolyte Matrix		
Calcium (as Calcium Chloride)	2 mg	0%
Magnesium (as Magnesium Chloride)	2.5 mg	1%
Potassium (as Potassium Citrate Monohydrate)	26 mg	1%
Proprietary Blend	657 mg	
Beta-Alanine		++
Caffeine Anhydrous	158 mg	++
L-Leucine		++
L-Valine		++
L-Isoleucine		++
N-Acetyl-L-Tyrosine		++
Toothed Clubmoss (<i>Huperzia serrata</i>) (leaves) [std. to 1% huperzine A]		++
Yohimbe (<i>Corynanthe yohimbe</i>) (bark) [std. to yohimbine HCl]		++
N-methyl Tyramine		++
Yerba Mate Extract (<i>Ilex paraguariensis</i>) (leaves)		++
Evodiale (<i>Evodia fructus</i>) (fruit) [std. to evodiamine]		++
Vinpocetine		++
5-HTP (<i>Crochma simplicifolia</i>) (seeds)		++

Not a significant source of vitamin A, vitamin C, calcium and iron.
* Percent Daily Values are based on a 2,000 calorie diet.
†† Daily Value not established.

A normal reaction to Redline Xtreme is tingling of skin. Redline Xtreme contains no alcohol.

Allergen Warning: Manufactured in a facility that processes milk, eggs, shellfish, tree nuts, peanuts, wheat and soy.