

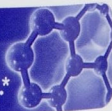


Serracor-NK[®]

*Supports Healthy Inflammatory Response**

Serrapeptase & Nattokinase Formula

**Supports Respiratory & Cardiovascular Health;
Promotes Fibrin Metabolism.***



Professional Strength



300 DIETARY SUPPLEMENT
VEGETARIAN CAPSULES

Supplement Facts

Serving Size: 1 Capsule

Servings Per Container: 300

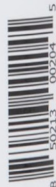
Amount Per Serving	% Daily Value
Serracor-NK [®] Blend	500 mg **
SEBkinase[®] Blend:	
Acid-Resistant Serrapeptase (Peptizyme SP [®] EN) & Acid-Resistant Nattokinase	
Enzyme & Cofactor Blend:	
Bromelain, Papain, Lipase, Proteases, Rutin, Amla, Coenzyme Q10 & Magnesium	

**Daily Value (DV) not established

Other ingredients: Cellulose (vegetarian capsule), maltodextrin and silica.

AST Enzymes[®]
13591 Yorba Ave., Chino, CA 91710
www.ASTenzymes.com

FREE OF: Wheat, egg, milk, soy, tree nuts, peanuts, fish, shellfish and sesame.¹



SN3-R6

Manufactured and laboratory tested in the USA.

Serracor-NK promotes healthy cardiovascular, circulatory, and respiratory systems. A powerful systemic enzyme blend, **Serracor-NK** supports a healthy response to inflammation*

Directions: Take with a large glass of water.

Maintenance: 1-2 capsules, 3 times a day.

Therapeutic: 3 capsules, 3 times a day.

MUST BE TAKEN ON AN EMPTY STOMACH
(30 minutes before or 2 hours after meals).

KEEP OUT OF REACH OF CHILDREN.

STORAGE: Closed in a cool, dry place. Avoid excessive heat.

CAUTION: If taking anticoagulant drugs, do not use this product before consulting your physician. Consult your doctor before use if pregnant, nursing, or taking medication. Discontinue if adverse conditions occur.

¹Manufactured in cGMP facilities that also process wheat, milk, eggs, and soy.

*These statements have not been evaluated by the Food and Drug Administration. This product is not intended to diagnose, treat, cure, or prevent any disease.