

Chromium Picolinate is an essential trace element that maintains healthy blood sugar levels. It is also used to support energy levels and athletic performance.*

Superior Labs **Chromium Picolinate** capsules contain 62mcg pure Chromium from at least 500mcg Chromium Picolinate. Our capsules contain absolutely no magnesium stearate, dioxides, preservatives, or other potentially harmful artificial ingredients of any kind.

Suggested Use: As a dietary supplement, adults take 1 capsule per day or as directed by your health care practitioner. Best when taken with a meal.

Caution: Do not exceed recommended dosage. Please consult a physician before consuming this product if you are pregnant or nursing, taking medication or have a medical condition. Not intended for use by individuals under the age of 18. Store in a cool, dry place. Do not use if safety seal is damaged or missing. **KEEP OUT OF REACH OF CHILDREN.**

SuperiorLabs®



*These statements have not been evaluated by the Food and Drug Administration. This Product is not intended to diagnose, treat, cure or prevent any disease.

SuperiorLabs®

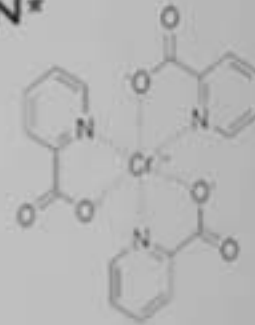
Chromium Picolinate

OPTIMAL ABSORPTION

PURE AND POTENT

Pure Chromium

- ✓ UPHOLDS METABOLISM FUNCTION*
- ✓ SUPPORTS ENERGY LEVELS*
- ✓ SUPPORTS ALREADY HEALTHY BLOOD SUGAR LEVELS*



This product is formulated, developed and manufactured in a FDA registered and GMP certified facility, 3rd party inspected by a leading compliance authority for superior quality assurance.

DIETARY SUPPLEMENT

120 VEGETABLE CAPSULES

Supplement Facts

Serving Size: 1 Vegetarian Capsule

	Amount Per Serving	± %DV
Chromium (from 500mcg Chromium Picolinate)	62mcg	177%

±Percent Daily Value based on a 2,000 calorie diet.

Other Ingredients: Organic rice concentrate, Plant cellulose (vegetable capsule).

Does NOT Contain:

Magnesium stearate, dioxides, preservatives, or artificial ingredients of any kind.

Manufactured Exclusively for
Superior Labs, LLC.
Park City, UT 84098



www.superiorlabs.com | (888)708-5227