

SUGGESTED USE DHEA is an internally produced hormone and is only intended for use following the testing, recommendation and guidance of a health care professional. Consume one capsule daily pursuant to the instructions of your physician. Do not consume more than the recommended dosage. **For questions about the use of this product call 800.800.1200.**

Please consult the warnings below.

WARNING. Not for use by those under 30 years of age. Do not use if pregnant or nursing. Do not use if currently taking hormone-related drugs or therapy. Exclusively intended for use by those following testing and recommendation from a qualified health care professional and who will remain under the supervision of that health care professional. Never exceed the recommended daily serving size. Keep out of the reach of children.

COMPETITIVE ATHLETE CAUTION. DHEA is classified as a prohibited substance by many sports organizations, including the World Anti-Doping Association (WADA). Before use, please consult your health care provider and the rules of your specific athletic association to determine if DHEA is permitted.

QUESTIONS? REORDERS?

800.800.1200 PROCAPS.COM

Manufactured by ProCaps Labs
Henderson, NV 89011

512153



©2024 ProCaps Labs

607705-04M



ANDREW LESSMAN

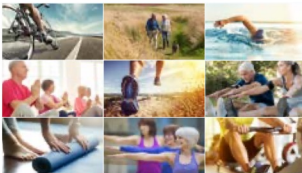
PROCAPS



DHEA 25

Dehydroepiandrosterone

Promotes Hormone Balance
Throughout the Aging Process



Dietary Supplement | **240** Easy-to-Swallow Capsules

DHEA (dehydroepiandrosterone) is the most abundant internally produced steroid hormone in the human body. It is primarily produced by the adrenal glands and circulates throughout the body where its most important role is to be converted into our most vital hormones that regulate and affect virtually all metabolic and biochemical processes. Our **DHEA 25** is designed to support healthy DHEA levels that decline with age and other factors. It is only intended for use following the testing and recommendation for supplementation by your health care professional. DHEA is among the most critical and important hormones found circulating in the body, but its levels begin to decline following our mid-20s. DHEA affects virtually all our body's organs, systems and metabolic functions. DHEA plays a vital, central role in hormone synthesis, balance and metabolism. Given its role in hormone balance and endocrine function, it should only be utilized with great care and exclusively based upon a test by your health care provider revealing insufficiency. There are currently a growing number

of physicians who now test and monitor their patients' DHEA levels because they believe that some aspects of the aging process may relate to prematurely reduced levels of DHEA. When DHEA levels warrant external support, DHEA supplementation has been observed to support a healthy aging process.

These statements have not been evaluated by the Food and Drug Administration. This product is not intended to diagnose, treat, cure or prevent any disease.

CONTAINS NO ADDITIVES OR COMMON ALLERGENS

Supplement Facts

Serving Size 1 Capsule Servings Per Container 240

Amount Per Serving	% DV*
Vitamin C (as calcium ascorbate/palmitate)	60 mg 67%
Calcium (as calcium carbonate/ascorbate)	60 mg 5%
Magnesium (as magnesium oxide)	60 mg 14%
DHEA (as dehydroepiandrosterone)	25 mg †

* Percent Daily Values (% DV). † Daily Value not established.

Other Ingredients: Natural plant cellulose vegetarian capsule.