

Suggested Use: As a dietary supplement take 1-4 capsules daily with food, or as directed by a health care professional.

Does Not Contain: wheat, gluten, rye, oats, barley, yeast, egg, soy, dairy, citrus, sugar, wax, artificial preservatives, flavors, or colorings.

†These statements have not been evaluated by the Food and Drug Administration. This product is not intended to diagnose, treat, cure, or prevent any disease.

**STORE IN A COOL, DRY PLACE
KEEP OUT OF REACH OF CHILDREN**

F2206197

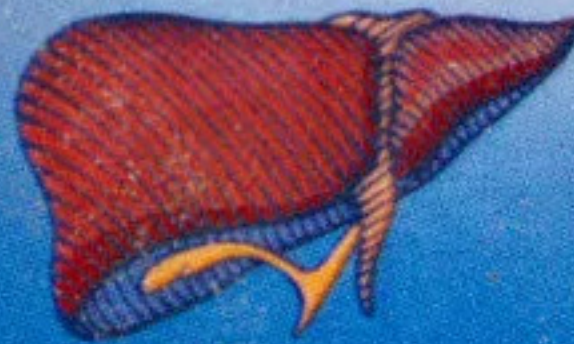
MFG.08/2022



Distributed by:
Health Products Distributors, Inc.
1210 W American Ave
Oracle, AZ 85623



HEPA PLUS



Nutritional Support of Liver Function†

A Dietary Supplement 120 Capsules

Supplement Facts

Serving Size: 1 Capsule

Servings Per Container: 120

Amount Per Serving	%Daily Value
Thiamine (as HCl) (Vitamin B1)	5 mg 417%
Selenium (from L-selenomethionine)	25 mcg 45%
Molybdenum (from Mo glycinate chelate)	25 mcg 56%
L-Cysteine HCl	100 mg *
Milk Thistle Extract (<i>Silybum marianum</i>) (standardized to 80% Silymarin) (seed)	90 mg *
Dandelion Root Extract 4:1	75 mg *
Glycine	50 mg *
Taurine	50 mg *
L-Ornithine HCl	40 mg *
Alpha-Lipoic acid	25 mg *

*Daily value not established

Other Ingredients: HPMC (cellulose capsule), microcrystalline cellulose, magnesium stearate, and silicon dioxide.