

# Specialized Blend for Immune System Support\*

Supports natural killer cell activity\*

Explore more products at [NATURESWAY.COM](https://www.naturesway.com)

**Keep out of reach of children.** Safety sealed with inner seal. Do not use if seal is broken or missing. Keep tightly closed. Store at room temperature. Avoid excessive heat and direct sunlight.

**GLUTEN FREE.** No wheat, soy, dairy, gelatin, or artificial colors or flavors.

◆ LH05800.F01 BLK580F

©2023 Nature's Way Brands, LLC  
Green Bay, WI 54311 USA  
Bottled and tested in the USA  
Questions? 1-800-962-8873 / [naturesway.com](https://www.naturesway.com)



BOTTLE MADE FROM  
50% POST-CONSUMER  
RECYCLED PLASTIC

\*THESE STATEMENTS HAVE NOT BEEN EVALUATED BY THE FOOD & DRUG ADMINISTRATION. THIS PRODUCT IS NOT INTENDED TO DIAGNOSE, TREAT, CURE, OR PREVENT ANY DISEASE.

## Cell Forté® IP-6 & INOSITOL

Supports Natural  
Killer Cell Activity\*



240 VEGAN CAPSULES - DIETARY SUPPLEMENT

Nature's  
Way

# Formulated with IP-6 and inositol

IP-6 & inositol supports the immune system.\* While IP-6 is found in rice bran and other foods, there are good reasons to take an IP-6 & inositol supplement. IP-6 is often lacking in foods that have been processed since IP-6 is usually found in bran or hull, which is often milled away.

Explore more products at  
[NATURESWAY.COM](https://www.naturesway.com)



Contains IP-6 and inositol for immune system support\*



Inositol is a type of sugar that is a component of cell membranes



Good source of calcium, phosphorus, and magnesium



\*THESE STATEMENTS HAVE NOT BEEN EVALUATED BY THE FOOD & DRUG ADMINISTRATION. THIS PRODUCT IS NOT INTENDED TO DIAGNOSE, TREAT, CURE, OR PREVENT ANY DISEASE.

\*THESE STATEMENTS HAVE NOT BEEN EVALUATED BY THE FOOD & DRUG ADMINISTRATION. THIS PRODUCT IS NOT INTENDED TO DIAGNOSE, TREAT, CURE, OR PREVENT ANY DISEASE.

\*THESE STATEMENTS HAVE NOT BEEN EVALUATED BY THE FOOD & DRUG ADMINISTRATION. THIS PRODUCT IS NOT INTENDED TO DIAGNOSE, TREAT, CURE, OR PREVENT ANY DISEASE.

## Cell Forté® IP-6 & INOSITOL

Supports Natural  
Killer Cell Activity\*



DIETARY SUPPLEMENT  
240 VEGAN CAPSULES

Nature's  
Way

**Recommendation:** Adults take 2 capsules twice daily. Best taken on an empty stomach. If you are pregnant, nursing, or taking any medications, consult a healthcare professional before use.

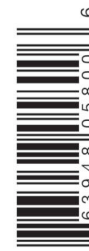
### Supplement Facts

Serving Size 2 Capsules / Servings per Container 120

Amount per Serving		% DV†
Total Carbohydrate	<1 g	<1%†
Calcium (from calcium magnesium phytate)	131 mg	10%
Phosphorus (from calcium magnesium phytate)	192 mg	15%
Magnesium (from calcium magnesium phytate)	40 mg	10%
IP-6 (inositol hexaphosphate) (from calcium magnesium phytate)	800 mg	**
Inositol	220 mg	**

†Percent Daily Values (DV) are based on a 2,000 calorie diet.  
\*\*Daily Value not established.

Other ingredients: cellulose, plant-derived capsule (hypromellose), magnesium stearate



7 63948058001 6

BLK580F

LHBX05800.F01

**Recommendation:** Adults take 2 capsules twice daily. Best taken on an empty stomach. If you are pregnant, nursing, or taking any medications, consult a healthcare professional before use.

### Supplement Facts

Serving Size 2 Capsules / Servings per Container 120

Amount per Serving		% DV†
Total Carbohydrate	<1 g	<1%†
Calcium (from calcium magnesium phytate)	131 mg	10%
Phosphorus (from calcium magnesium phytate)	192 mg	15%
Magnesium (from calcium magnesium phytate)	40 mg	10%
IP-6 (inositol hexaphosphate) (from calcium magnesium phytate)	800 mg	**
Inositol	220 mg	**

†Percent Daily Values (DV) are based on a 2,000 calorie diet.  
\*\*Daily Value not established.

Other ingredients: cellulose, plant-derived capsule (hypromellose), magnesium stearate

**Keep out of reach of children.** Safety sealed with inner seal. Do not use if seal is broken or missing. Keep tightly closed. Store at room temperature. Avoid excessive heat and direct sunlight.

**GLUTEN FREE.** No wheat, soy, dairy, gelatin, or artificial colors or flavors.

©2023 Nature's Way Brands, LLC  
Green Bay, WI 54311 USA  
Bottled and tested in the USA  
Questions? 1-800-962-8873 / [naturesway.com](https://www.naturesway.com)