

PLEASE RECYCLE  
 Made with Love by MegaFood.  
 P.O. Box 5244, Manchester, NH 03108 Phone: 800-634-6342 / 603-216-0899

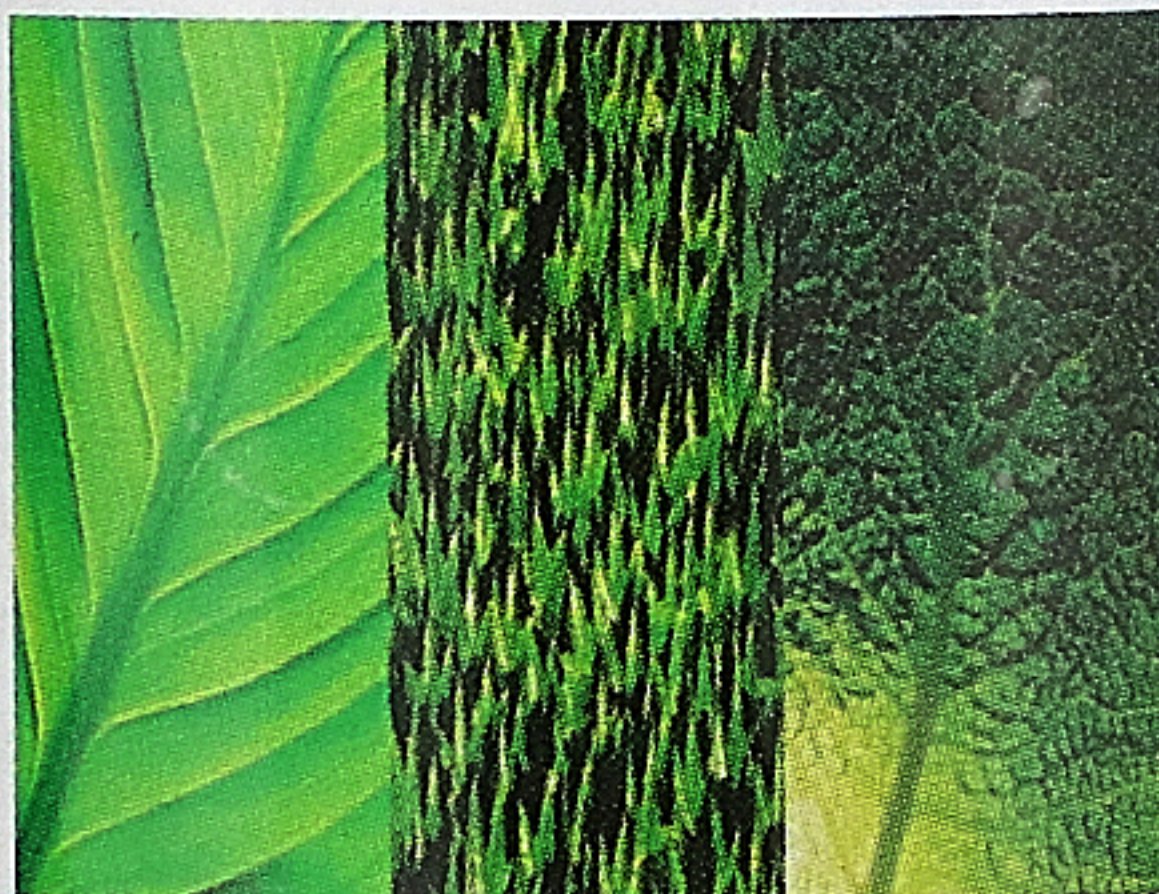


F1395B  
 Rev: 2 12/18  
 Best Before:  
 Lot#:

030 15:41  
 40124083  
 JAN 2023

# INNATE<sup>®</sup>

RESPONSE FORMULAS



*vis medicatrix naturae*

## Women Over 40<sup>™</sup> One Daily

SUPPORTS OPTIMAL  
 HEALTH & WELL-BEING\*

Multivitamin & Mineral  
 Dietary Supplement  
 60 Tablets

# Supplement Facts

Serving Size 1 Tablet  
 Servings per Container 60

|   | Amount per Serving   | % DV |
|---|----------------------|------|
| • Vitamin A (beta carotene with carrot) ....                                  | 338 mcg RAE          | 38   |
| • Vitamin C (ascorbic acid with organic orange)                               | 60 mg                | 67   |
| • Vitamin D3 (cholecalciferol with <i>S. cerevisiae</i> )                     | 10 mcg               | 50   |
| • Vitamin E (d-alpha tocopherol [sunflower]<br>with organic brown rice) ..... | 11 mg                | 73   |
| • Vitamin K (K1) (phytonadione with cabbage) ..                               | 30 mcg               | 25   |
| • Thiamin (B1) (thiamine HCl with <i>S. cerevisiae</i> ) ..                   | 3 mg                 | 250  |
| • Riboflavin (B2) (with organic brown rice) .....                             | 2 mg                 | 154  |
| • Niacin (niacinamide with <i>S. cerevisiae</i> ) .....                       | 20 mg NE             | 125  |
| • Vitamin B6 (pyridoxine HCl with <i>S. cerevisiae</i> )                      | 4 mg                 | 235  |
| • Folate (folic acid with broccoli) .....                                     | 400 mcg DFE          | 100  |
|   | (240 mcg folic acid) |      |
| • Vitamin B12<br>(cyanocobalamin with <i>S. cerevisiae</i> ) .....            | 10 mcg               | 417  |
| • Biotin (with organic brown rice) .....                                      | 30 mcg               | 100  |
| • Pantothenic Acid (d-calcium pantothenate<br>with organic brown rice) .....  | 10 mg                | 200  |
| • Iron (mineral bound <i>S. cerevisiae</i> ) .....                            | 4.5 mg               | 25   |
| • Iodine (mineral bound <i>S. cerevisiae</i> ) .....                          | 150 mcg              | 100  |
| • Zinc (mineral bound <i>S. cerevisiae</i> ) .....                            | 14 mg                | 127  |

**Other Ingredients:** Cellulose, Silica, Stearic Acid.  
**Suggested Use:** 1 tablet daily, or as directed by your healthcare practitioner. May be taken anytime throughout the day, even on an empty stomach.

|  | Amount per Serving | % DV |
|--|--------------------|------|
| • Selenium (mineral bound <i>S. cerevisiae</i> ) .....   | 15 mcg             | 27   |
| • Copper (mineral bound <i>S. cerevisiae</i> ) .....   | 0.2 mg             | 22   |
| • Manganese (mineral bound <i>S. cerevisiae</i> ) .....  | 1 mg               | 43   |
| • Chromium (GTF)<br>(mineral bound <i>S. cerevisiae</i> ) .....  | 60 mcg             | 171  |
| • Molybdenum (mineral bound <i>S. cerevisiae</i> ) ..  | 30 mcg             | 67   |
| • Boron (mineral bound <i>S. cerevisiae</i> ) .....  | 500 mcg            | **   |
| <b>Nourishing Food &amp; Herb Blend*</b> .....   | 100 mg             | **   |
| Organic Chaste Tree Berry, Organic Red Clover Aerial<br>Parts, Organic Astragalus Root, Organic Eleuthero Root,<br>Organic Ashwagandha Root, Organic Ginkgo Leaf,<br>Organic Hawthorn Fruit, Organic Holy Basil Leaf, • Fruit<br>Phenolic Blend (Organic Whole Orange, Organic<br>Cranberry, Organic Blueberry), Organic Schisandra<br>Berry, Organic Turmeric Root, Organic Milk Thistle Seed,<br>Organic Ginger Root, Organic Nettle Leaf, Organic<br>Shiitake Mushroom Mycelium |                    |      |

\*\* % Daily Value (DV) not established  
**Warning:** Accidental overdose of iron-containing products is a leading cause of fatal poisoning in children under six. Keep this product out of reach of children. In case of accidental overdose, call a doctor or poison control center immediately.

\* This statement has not been evaluated by the Food and Drug Administration.  
 This product is not intended to diagnose, treat, cure or prevent any disease.

Certified  
  
 Corporation  
  
 nongmoproject.org

To learn about our seals, please visit [innateresponse.com/standards](http://innateresponse.com/standards)

At INNATE Response we share your belief that nothing is more important than supporting your body's innate ability to heal. To that end, we develop nutrient-rich supplements.

• This INNATE Response product is made with real food, carefully selected herbs and added nutrients. Each vitamin and mineral is paired with an ideal whole food using our unique process to deliver guaranteed potency and the benefit of health-promoting compounds present in the whole food itself.\* See how they're made at [innateresponse.com/showme](http://innateresponse.com/showme). Satisfaction guaranteed or your money back.

Learn more at: [www.innateresponse.com](http://www.innateresponse.com)