

DIETARY SUPPLEMENT



# WellBetX<sup>®</sup> Berberine 500 mg

120 Vegetarian Capsules

**Suggested usage:** 1 capsule 2 times per day or as directed by a health professional.

**Cautions:** As with any supplement, consult your health professional before use if you are pregnant, breastfeeding, or trying to conceive, or if you are taking medication, have a medical condition, or anticipate a surgery. Consult a health professional for use beyond 3 months. Keep out of the reach of children.

Berberine is a naturally occurring plant alkaloid found in various plants, including barberry, goldenseal, and Oregon grape. Many herbalists credit this unique alkaloid for the beneficial effects of many traditional tonics made from these plants. Berberine plays an important role in blood sugar (glucose) metabolism and cardiovascular health.\* Berberine helps maintain healthy blood sugar and total cholesterol levels already within the normal range.\*

**Manufactured by Natural Factors to ensure safety and potency in accordance with Good Manufacturing Practices (GMP) of the FDA and Health Canada.**

*Contains no artificial colors, preservatives, or sweeteners; no dairy, starch, sugar, wheat, gluten, yeast, soy, corn, egg, fish, shellfish, animal products, salt, tree nuts, or GMOs. Suitable for vegetarians/vegans. Sealed for your protection. Do not use if seal is broken. For freshness, store in a cool, dry place.*

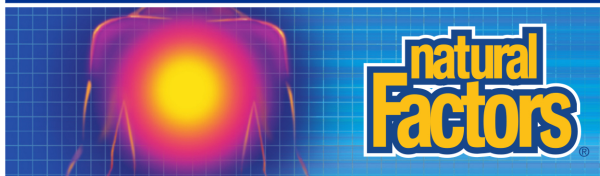
\* This statement has not been evaluated by the Food and Drug Administration. This product is not intended to diagnose, treat, cure, or prevent any disease.

PRODUCT OF CANADA  
Manufactured by Natural Factors Canada  
Distributed by NATURAL FACTORS  
14224 167th Avenue SE  
Monroe, WA 98272



Recyclable container and label.

## BLOOD SUGAR & CARDIOVASCULAR SUPPORT\*



## Supplement Facts

Serving Size 1 Vegetarian Capsule

	Amount Per Serving	% Daily Value
Berberine (hydrochloride) (from <i>Berberis vulgaris</i> extract) (root)	500 mg	**

\*\* Daily Value not established.

Other ingredients: Vegetarian capsule (carbohydrate gum [cellulose], purified water), microcrystalline cellulose, magnesium stearate (vegetable grade), stearic acid, silica.

LOT & EXPIRY 1.3125" x .25" Single Line

