

**SUGGESTED USAGE:** As a dietary supplement for adults, take 2 tablespoons (1 fl. oz.) daily in juice or water.

**SHAKE WELL BEFORE USING. REFRIGERATE AFTER OPENING.  
KEEP OUT OF REACH OF CHILDREN.**

NOW® Raspberry Flavored Colloidal Minerals is a pleasant tasting blend comprised of highly absorbable, water-soluble minerals derived from prehistoric plant deposits in Utah. Each 1 ounce serving has naturally occurring trace amounts of many major and trace minerals. These colloidal minerals were created ages ago when they became incorporated into the living plants, fruits and vegetables of that era. These trace elements helped to form the luscious vegetation which contributed to the vibrant life which flourished on this planet.

CODE 1406 V8



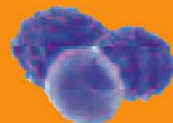
The following minerals occur naturally in fulvic acid:

Boron	Magnesium	Selenium
Calcium	Manganese	Silver
Chromium	Molybdenum	Sodium
Copper	Phosphorus	Sulfur
Iron	Potassium	Zinc

**Caution:** For adults only. Consult physician if pregnant/nursing, taking medication, or have a medical condition. Keep out of reach of children.

Made in the USA

Please Recycle



Natural Raspberry Flavor

# Colloidal Minerals

**ESSENTIAL TRACE MINERALS**

**Fulvic Acid Trace Minerals**

- Plant Derived
- Water Soluble

**32 fl. oz. (946 mL)**

A Dietary Supplement



## Supplement Facts

Serving Size 1 fl. oz. (2 TBSP) (30 mL)

Servings Per Container about 32

	Amount Per Serving	% Daily Value
Calories	10	
Total Carbohydrate	2 g	< 1%*
Sugars	2 g	†
Liquid Colloidal Minerals Blend	30 mL	†

\* Percent Daily Values are based on a 2,000 calorie diet.  
† Daily Value not established.

Ingredients: Purified Water, Fructose, Citric Acid, Natural Raspberry Flavors, Fulvic Acid, Natural Vegetable Extract, Potassium Sorbate (as preservative), Potassium Benzoate (as preservative) and Stevia Extract (Leaf).

Formulated & Distributed by NOW FOODS

395 S. Glen Ellyn Rd.

Bloomington, IL 60108, USA

For more product information visit [www.nowfoods.com/1406](http://www.nowfoods.com/1406)

Not manufactured with yeast, wheat, gluten, soy, milk, egg, fish, shellfish or tree nut ingredients. Produced in a GMP facility that processes other ingredients containing these allergens.